

Self Contained Ice Machine up to 24,5 Kg



EASY-FIT
Progressive Water Discharge

Routine Maintenance Alarm

Front ON-OFF Switch

Spray bar quick disconnect

Proximity condenser air filter

Easy bin access

Hygienic scoop holder

Water inlet

Water outlet
(Progressive Water Discharge)

WATER DISCHARGE up to 15 mt away and 1.7 mt high with PWD



Features

- Produces individual Gourmet crystal clear supercubes
- Up to 24,5 (54 lbs) kg daily ice cubes production
- Up to 9 kg (20 lbs) ice storage capacity
- Resistant stainless steel exterior
- Simple and reliable electromechanic controls
- Front panel in& out airflow (air-cooled model only) for built-in installation
- Front access condenser air filter, removable and washable (air cooled version only)
- Easily accessible front panel mount ON-OFF Switch
- Routine Maintenance visible alarm light on front panel
- Ergonomically designed ice storage access, with disappearing door.
- Door-closing movement dampening system
- Vapor-based microbial control system pouch in ice storage area
- Water system protected by patented anti-scale system
- **PWD System** for remote water drain (easy-fit installation)
- AgION antimicrobial agent embedded in moulded plastics parts
- CFC-free R-134a Refrigerant
- 2 years manufacturer warranty

EC 46 Technologies



Model	Icon	10° : 10°C			21° : 15°C			Dimensions [WxDxH mm]
		[kg]	[lbs]	N ^o	[kg]	[lbs]	N ^o	
EC 46 AS		24,5	54	1225	22	48	1100	386x600x645
EC 46 WS		24,5	54	1225	22,5	49	1125	15"x23"x25"



[v/Hz/ph]
230/50/1



R 134a

*Estimate number of small, medium or large size gourmet cubes.

This product qualifies for the following listings:



Medium Gourmet
20 g



Ø 29 x H 34 mm

2 Years Warranty

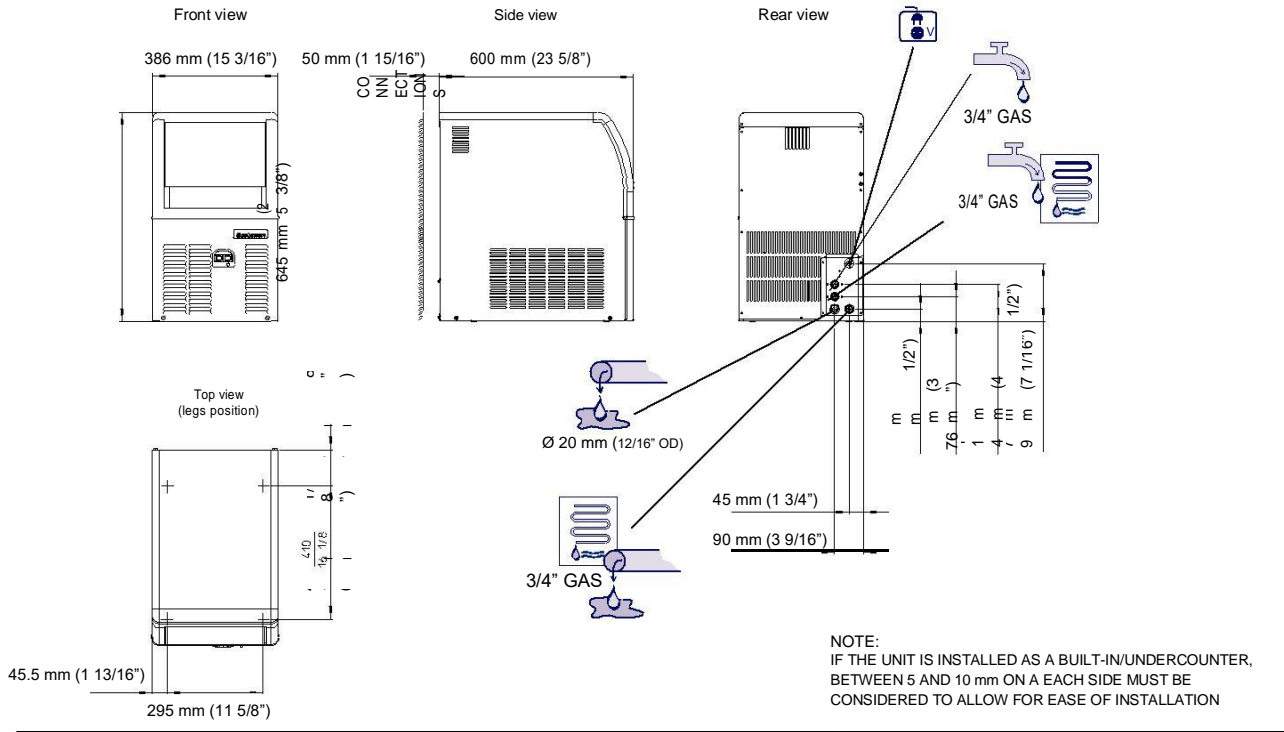
Subject to certain limitations and exclusions

www.scotsman-ice.it
www.scotsman-ice.com

Certified ISO 9001:2000

Models and specifications are subject to change without notice.

Self Contained Ice Machine up to 24,5 Kg



EC 46 AIR COOLED

°C \ °F	50° 10°	60° 15°	70° 21°	90° 32°	
10° 50°	24.5 54	24 53	23.5 52	22.5 49	kg lbs
21° 70°	22.5 49	22 48	21.5 47	20.5 45	kg lbs
32° 90°	19.5 43	19 42	18.5 41	17.5 41	kg lbs
38° 100	18 39	17.5 38	17 37	16 35	kg lbs



EC 46 WATER COOLED

°C \ °F	50° 10°	60° 15°	70° 21°	90° 32°	
10° 50°	24.5 54	24 53	23.5 52	22.5 49	kg lbs
21° 70°	23 50	22.5 49	22 48	21 45	kg lbs
32° 90°	22 48	21.5 47	21 45	20 40	kg lbs
38° 100	20 40	19.5 43	19 42	18 39	kg lbs



Minimum	Maximum
10°C (50°F)	40°C (104°F)
5°C (41°F)	35°C (95°F)
-10%	+10%
1 BAR 14 psi	5 BAR 70 psi

	+	-	[Btu/h]	[W]	[Ømm] ²	[W]	FUSE	[kWh] - 100 Kg	[l/h]	[gal/h]	[kg]	[lbs]	[kg]	[lbs]
EC 46 AS	+	-	2730	800	1,5	400	10	40,8	3.2	0.84	37	81	44	97
EC 46 WS	-	-	2730	800	1,5	400	10	31	27.3	7.2	37	81	44	97